

**ALAMEDA COUNTY and CONTRA COSTA COUNTY –
AFFORDABLE HOUSING OPEN WAITLISTS OR APARTMENTS**

March 2024



Directions:

Please see the listings below and apply to as many open waitlists as possible that you are qualified for. It is recommended to keep a list of all of the affordable apartments that you have applied to, as well as a copy of your completed application for your records. Please note it can take one or more years to get to the top of the waiting lists, but it is well worth your wait as rents are lower than normal for these affordable apartments!

Disclaimer:

This list is maintained by JFCS East Bay volunteers and staff, and may not be completely up to date. If you want more information or the most up to date information about each apartment, it is recommended that you contact that apartment direct



The Oaks Apartments

3073 North Main Street Walnut Creek, CA 95127
925) 937-5559



MANAGED BY:

EAH Housing

OPEN TO:

Families

BEDROOM SIZES:

2, 3, or 4-bedroom

RENT AMOUNTS:

2BR: \$1,568-\$1,901/mo

3BR: \$1,797-\$2,181/mo

4BR: \$2,417/mo

MINIMUM HOUSEHOLD INCOME REQUIREMENT:

1 person: minimum income \$45,720 to max income \$60,000

9 person: minimum income \$45,720 to max income \$119,940

OCCUPANCY:

1-9 people

HOW TO APPLY:

Apply online at [Login to The Oaks to track your account | The Oaks \(securecafe.com\)](https://securecafe.com)

DEADLINE:

None listed.

Ancora Place

2227 International Blvd, Oakland, CA
(888) 818-1458



MANAGED BY:

SAHA

OPEN TO:

Families

BEDROOM SIZES:

Studio, 1, 2 and 3 bedroom available

RENT AMOUNTS:

\$444-\$2,187

MINIMUM HOUSEHOLD INCOME REQUIREMENT:

15% - 70% AMI.

Example for 1 person studio, minimum income is \$10,656 up to \$59,700 maximum income per year.

Example for 7 people in a 3-bedroom, minimum income is \$42,312 up to \$110,040 maximum income per year.

OCCUPANCY:

1-7 people

HOW TO APPLY:

Contact volunteers@jfccs-eastbay.org for an application or apply online at

<https://housing.acgov.org/applications/start/choose-language?listingId=123f4226-3f3d-4311-9e54-49e47ecfb068>

DEADLINE:

Online applications must be submitted by 5:00 PM on March 13, 2024 through the Alameda County Housing Portal. Paper applications will also be available to pick-up and drop-off at 1245 23rd Ave, Oakland, CA 94606 at the following times:

Thursday, February 29, 2024, 9:00 am – 4:00 pm

Tuesday, March 5, 2024, 9:00 am – 4:00 pm

Thursday, March 7, 2024, 9:00 am – 4:00 pm

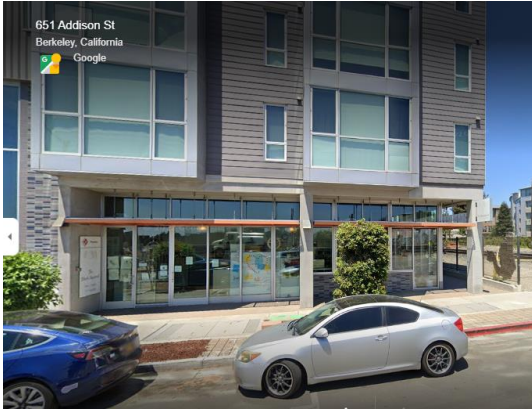
Tuesday, March 12, 2024, 9:00 am – 4:00 pm

Paper applications will also be available online to print. Paper applications must be mailed to the address listed on the application. Paper applications must be postmarked by March 13, 2024 AND received by the manager's office by 5:00 PM on March 20, 2024.

A lottery will be conducted for all applications received by the deadline. All applications will be placed on the waiting list for consideration. The 24-hour support phone line will open on February 28, 2024 at 9:00 AM and close on March 13, 2024 at 5:00 PM. Please call (888) 818-1458 for assistance.

Avalon Berkeley

651 Addison Street • Berkeley, CA 94710
(510) 876-9200



MANAGED BY:

Avalon Communities

OPEN TO:

Families

BEDROOM SIZES:

1-bedroom or 2-bedroom

RENT AMOUNTS:

Studio: \$1,201-\$2,237/mo

1BR: \$1,366-\$2,509/mo

2BR: \$1,530-\$2,778mo

MINIMUM HOUSEHOLD INCOME REQUIREMENT:

1 person: minimum income \$28,824 to max income \$102,880

5 person: minimum income \$36,720 to max income \$114, 240

OCCUPANCY:

1-5 people

HOW TO APPLY:

Apply online at [Avalon Berkeley \(avaloncommunities.com\)](http://Avalon Berkeley (avaloncommunities.com))

DEADLINE:

None listed – apply as soon as possible!

Avalon Dublin

5200 Iron Horse Parkway
Dublin, CA 94568 (925) 230-6911



MANAGED BY:

Avalon Communities

OPEN TO:

Families

BEDROOM SIZES:

1, 2 or 3-bedroom

RENT AMOUNTS:

Studio: \$1,595-\$1,750/mo

1BR: \$1,695-\$1,950/mo

2BR: \$2,095-\$2,350/mo

3BR: \$2,750-\$2,900/mo

MINIMUM HOUSEHOLD INCOME REQUIREMENT:

Not available, call for details.

OCCUPANCY:

1-6 people

HOW TO APPLY:

Apply online at [Avalon Dublin Station \(avaloncommunities.com\)](http://Avalon Dublin Station (avaloncommunities.com))

DEADLINE:

None listed – apply as soon as possible!

Eden Baywood

4275 Bay Street, Fremont, CA 94538
(510) 651-1075



MANAGED BY:

Eden Housing

OPEN TO:

Families

BEDROOM SIZES:

2 or 3-bedroom

RENT AMOUNTS:

2 Bdrm at 60% AMI – Rent \$1,929. Deposit \$1,929

3 Bdrm at 60% AMI – Rent \$2,228. Deposit \$2,228

MINIMUM HOUSEHOLD INCOME REQUIREMENT:

Min. Income Requirement 2X the rent. Max Income Requirement for 60% AMI Units: 1 Person: \$60,000; 2 Person: \$68,580; 3 Person: \$77,160; 4 Person: \$85,680; 5 Person: \$92,580.

OCCUPANCY:

1-5 people

HOW TO APPLY:

Go to On-Site.com, select "Apply to a Property" under "Renters," to search for property waitlist application after March 6.

DEADLINE:

WAIT LIST OPENS FOR 2 & 3 BEDROOM 60% AMI UNITS on March 6th.

West Rivertown

811 West 4th Street, Antioch, California
(925) 777-1605



MANAGED BY:

Eden Housing

OPEN TO:

Families

BEDROOM SIZES:

1, 2 or 3-bedroom

RENT AMOUNTS:

Call for details

MINIMUM HOUSEHOLD INCOME REQUIREMENT:

Call for details

OCCUPANCY:

1-8 people

HOW TO APPLY:

Apply online at [Login | On-Site](#)

DEADLINE:

None listed.

Antioch Family and Senior Apartments

3516 E 18th Ave, Antioch, CA [\(925\) 420-8375](tel:(925)420-8375)



MANAGED BY:

AMCAL Housing

OPEN TO:

Families and Seniors 55+

BEDROOM SIZES:

1, 2 or 3-bedroom

RENT AMOUNTS:

\$743-\$2181

MINIMUM HOUSEHOLD INCOME REQUIREMENT:

Monthly income needs to be 30%-60% of rent (may vary for Seniors)

OCCUPANCY:

1-8 people

HOW TO APPLY:

Call (925) 420-8375 to make an appointment and get an application.

DEADLINE:

2-bedroom units available today. 3-Bedroom units may be available in April or May.

Brookfield Place Apartments

555 98th Ave, Oakland, CA (510) 562-1260



MANAGED BY:

AMCAL Housing

OPEN TO:

Families

BEDROOM SIZES:

1, 2 or 3-bedroom

RENT AMOUNTS:

\$742-\$2158

MINIMUM HOUSEHOLD INCOME REQUIREMENT:

Income needs to be 30%-50% of rent.

OCCUPANCY:

1-7 people

HOW TO APPLY:

Apply online at [Brookfield Place - Apartments in Oakland, CA \(brookfieldplaceapts.com\)](http://brookfieldplaceapts.com)

DEADLINE:

None listed, apply for waitlist today.

Richmond City Center Apartments

1000 Macdonald Ave #109, Richmond, CA



MANAGED BY:

Bridge Housing

OPEN TO:

Families

BEDROOM SIZES:

1, 2 and 3-Bedroom

RENT AMOUNTS:

\$1,706-\$2,067

MINIMUM HOUSEHOLD INCOME REQUIREMENT:

Minimum income is \$40,944 to maximum income of \$106,260, depending on household size.

OCCUPANCY:

1-7 people.

HOW TO APPLY:

Email volunteers@jfcs-eastbay.org for a copy of the application and follow directions to apply. Call 510-236-4350 with any questions.

DEADLINE:

None provided.

MacArthur Commons

Willowick Residential, 540 39th Street Oakland, CA 94609



MANAGED BY:

MacArthur Commons

OPEN TO:

Singles/Small families

BEDROOM SIZES:

Studio, 1-Bedroom

RENT AMOUNTS:

\$1,508-\$1,956

MINIMUM HOUSEHOLD INCOME REQUIREMENT:

Your household monthly income must be at least 2.5 times the rent amount to qualify.
(\$3,016-\$4,890 per month).

OCCUPANCY:

Depends on size unit

HOW TO APPLY:

Apply online at [MacArthur Commons | Authentication \(prospectportal.com\)](#) Call (510) 653-8512 for more information.

DEADLINE:

None listed but waitlist is open.

Newton House Collective

285 Newton Street, Oakland, CA 94606



MANAGED BY:

Bay Area Land Community Trust

OPEN TO:

This house has provided affordable housing centering LGBTQ.

BEDROOM SIZES:

A Bedroom in shared house

RENT AMOUNTS:

\$875-\$975

MINIMUM HOUSEHOLD INCOME REQUIREMENT:

Your household monthly income must be at least 2 times the rent amount to qualify. Maximum income is \$76,750 for 1 person and \$87,700 for 2 people.

OCCUPANCY:

1-2 people

HOW TO APPLY:

1. Attend a Virtual Open House, hosted every third Wednesday at 6pm.
2. Attend a virtual Orientation Session, via Zoom (Required): All interested applicants must attend a 1-hour Orientation Session before they can receive an application. Interested applicants can register to attend via: <https://us02web.zoom.us/meeting/register/tZEvde2qrzwtGdDZwBkKF7Zca72cpzHxfvQC>
After completing the orientation session, we will email you an application. People needing a special accommodation for translation, visual or hearing assistance can send a request to: vacancy@bayareactl.org.
3. Applications must be emailed to vacancy@bayareactl.org or postmarked to BACLT PO Box 2652 Berkeley, CA 94702.

DEADLINE:

None listed. 2 bedrooms are available.

De Anza Terrace Apartments

16445 East 14th Street, San Leandro, CA
(510) 481-2556



MANAGED BY:

Eden Housing

OPEN TO:

Families

BEDROOM SIZES:

Studio, 2bdr

RENT AMOUNTS:

2bdr: \$2,664

MINIMUM HOUSEHOLD INCOME REQUIREMENT:

Your household monthly income must be at least 2.5 times the rent amount to qualify.

Maximum Household Income:

2 people \$94,720

3 people \$106,550

4 people \$118,320

5 people \$127,840

OCCUPANCY:

Studio: 1-2 people

1-bedroom: 1-3 people

2-bedroom: 2-5 people

HOW TO APPLY:

Need to apply in-person during regular business hours at 1300 Kentwood Ln, San Leandro, CA. Open until 5:30 Monday-Friday. There is a \$40 fee to apply. Call 510-481-2556 or email deanzaterrace@edenhousing.org for more information.

DEADLINE:

None listed, apply as soon as possible

Las Palmas

15369 Tropic Court, San Leandro, CA
(510) 357-6397



MANAGED BY:

Eden Housing

OPEN TO:

Families

BEDROOM SIZES:

1bdr, 2bdr

RENT AMOUNTS:

1bdr: \$1,263

2bdr: \$1,874

MINIMUM HOUSEHOLD INCOME REQUIREMENT:

Your household monthly income must be at least 2.5 times the rent amount to qualify.

Maximum income:

1-person household \$62,000

2-person household \$71,000

3-person household \$79,000

OCCUPANCY:

1-bedroom: 1-3 people

2-bedroom: 2-5 people

HOW TO APPLY:

Apply online at:

<https://www.on-site.com/?login=true>

DEADLINE:

None listed, apply as soon as possible!

Strobridge Court Apartments

21000 Wilbeam Avenue Castro Valley, CA 94546
(510) 728-9181



MANAGED BY:

Bridge Housing

OPEN TO:

Families

BEDROOM SIZES:

3bdr, 4bdr

RENT AMOUNTS:

3bdr: \$1,122 - \$1,423/month

4bdr: \$1,392 - \$1,564/month

MINIMUM HOUSEHOLD INCOME REQUIREMENT:

3bdr: \$26,928 and \$34,152/year

4 bdr: \$33,408 and \$37,536/year

OCCUPANCY:

3bdr: 3-7 people

4bdr: 4-9 people

HOW TO APPLY:

Email volunteers@jfcs-eastbay.org to request an application. More info at: <https://bridgehousing.com/properties/strobridge-court/>

DEADLINE:

None listed – apply as soon as possible.

Emerald Estates

71 10th Street, Oakland, CA 94607
(510) 255-5335 TTY: 711



MANAGED BY:

EBALDC

OPEN TO:

Families

BEDROOM SIZES:

1bdr, 2bdr

RENT AMOUNTS:

1bdr: \$1,473/month

2bdr: \$1,668/month

MINIMUM HOUSEHOLD INCOME REQUIREMENT:

Your household monthly income must be at least 2 times the rent amount to qualify.

OCCUPANCY:

None listed

HOW TO APPLY:

To apply, visit www.ebaldchaf.com, select "Applicant Login" and create an account to submit your application. More info at <https://ebaldc.org/property/emerald-estates/>

DEADLINE: None listed – apply as soon as possible

Virginia Lane

1121 Virginia Lane, Concord, California
(925) 849-6800



MANAGED BY:

Eden Housing

OPEN TO:

Families/Seniors

BEDROOM SIZES:

Available : open waitlist for 1 bdr, 2bdr, no current openings

RENT AMOUNTS:

1bdr: \$1,339

2bdr: \$1,607

MINIMUM HOUSEHOLD INCOME REQUIREMENT:

Minimum is not listed / known

Maximum is \$50,000 (1bdr), \$57,150 (2bdr)

OCCUPANCY:

1-bedroom: 1-3 people

2-bedroom: 2-5 people

HOW TO APPLY:

Contact volunteers@jfccs-eastbay.org for an application. Fill out application and then email to VirginiaLane@edenhousing.org

DEADLINE:

None listed – apply as soon as possible

Casa Grande Village

2125 92nd Avenue, Oakland, CA
(510) 250-2277 TTY: 711



MANAGED BY:

EBALDC

OPEN TO:

Families/Seniors

BEDROOM SIZES:

2bdr available on Waitlist

RENT AMOUNTS:

2bdr: \$1,768/month

MINIMUM HOUSEHOLD INCOME REQUIREMENT:

Rent is 80% of AMI. No minimum but maximum varies from \$91,440-\$123,440.

OCCUPANCY:

2-5

HOW TO APPLY:

Email volunteers@jfccs-eastbay.org to request an application and call **510-250-2277 TTY: 711** for next steps.

DEADLINE:

None listed – apply as soon as possible!

Hismen Hin-Nu Terrace

2555 International Blvd, Oakland, CA
(510) 261-3624



MANAGED BY:
EBALDC

OPEN TO:
Families/Seniors

BEDROOM SIZES:
2 or 3-bedroom

RENT AMOUNTS:
2bdr: \$1,879/mo
3bdr: \$2,159/mo

MINIMUM HOUSEHOLD INCOME REQUIREMENT:
2 bdr: \$57,086
3 bdr: \$65,915

Maximum Income less than 50% or 60% of the area median, depending on number of occupants

OCCUPANCY:
1-7 people

HOW TO APPLY:
Email volunteers@jfccs-eastbay.org to request an application. Send completed application to jortiz@ebaldc.org.

DEADLINE:
None listed - apply as soon as possible!

Kensington Gardens

1900 26th Avenue, Oakland, CA
(510) 434-1492



MANAGED BY:

EBALDC

OPEN TO:

Families/Seniors

Persons with disabilities encouraged to apply.

BEDROOM SIZES:

Studio, 1 or 2 bdr accepting applications

RENT AMOUNTS:

Studio: \$1,375/month

1bdr: \$1,473/month

2bdr: \$1m768

MINIMUM HOUSEHOLD INCOME REQUIREMENT:

Your household monthly income must be at least 2 times the rent amount to qualify.

\$80,000 (1 person) - \$123,400 (5 persons)

OCCUPANCY:

1-5 people

HOW TO APPLY:

Email volunteers@jfcs-eastbay.org to request an application. No application fee.

DEADLINE:

None listed - apply as soon as possible!

Alexan Webster

2330 Webster St, Oakland, CA
(510) 434-1492



MANAGED BY:

TCR

OPEN TO:

Families/Seniors

BEDROOM SIZES:

1bdr accepting applications

RENT AMOUNTS:

1bdr: \$2,284/month

MINIMUM HOUSEHOLD INCOME REQUIREMENT:

See next page



(844) 422-3905 [APPLY NOW](#)

UP TO 6 WEEKS FREE ON SELECT UNITS*
*CONTACT LEASING TEAM FOR DETAILS

2022 INCOME GUIDELINES

Qualifying Income Levels

HOUSEHOLD SIZE	1	2	3	4	5	6	7
Very Low Income	\$50,000	\$57,150	\$64,300	\$71,400	\$77,150	\$82,850	\$88,550
Low Income	\$76,750	\$87,700	\$98,650	\$109,600	\$118,400	\$127,150	\$135,950
Moderate Income	\$119,950	\$137,100	\$154,200	\$171,350	\$185,050	\$198,750	\$212,450

Qualifying Rent Limits

BEDROOMS	Studio	1 Bedroom	2 Bedrooms	3 Bedrooms
Very Low Income	\$1,020*	\$1,092*	\$1,305*	\$1,457*
Low Income	\$1,569*	\$1,696*	\$2,269*	N/A
Moderate Income	\$1,731*	\$1,884*	\$2,720*	N/A

OCCUPANCY:

1-7 people

HOW TO APPLY:

Apply online at <https://housing.acgov.org/>

DEADLINE:

None listed, apply as soon as possible

Ambassador

3610 Peralta Street, Emeryville, CA 94608
(510) 420-1140



MANAGED BY:

RCD

OPEN TO:

Families and seniors

There are (4) Units designed for residents with mobility impairments and (3) Units for hearing/vision impaired.

BEDROOM SIZES:

Studio, 1bdr, 2bdr, 3bdr

RENT /MIN INCOME AMOUNTS:

For units for mobility or hearing/vision impaired, rent is 30% of income.

MIN INCOME is 2.5 times the rent.

Studio – 40% AMI Rent \$1000

1 Bedroom – 45% AMI Rent \$1205

1 Bedroom – 50% AMI Rent \$1339

2 Bedroom – 40% AMI Rent \$1286

2 Bedroom – 50% AMI Rent \$1607

3 Bedroom – 30% AMI Rent \$1114

3 Bedroom – 40% AMI Rent \$1485

3 Bedroom – 50% AMI Rent \$1785

OCCUPANCY:

Dependent on size of unit

HOW TO APPLY:

Apply online at <https://housing.acgov.org/applications/start/choose-language?listingId=ab2de5f2-c569-41f2-96e3-daca29f70248>. Or pick up an application in person at 3610 Peralta Street Emeryville ,CA 94608. Call for more information (510) 420-1140.

DEADLINE:

None listed – apply as soon as you can.

Terraza Palmera at St. Joseph's

1272 26th Avenue, Oakland, CA 94601
(510) 261-7700 & (510) 261-0808



MANAGED BY:

Bridge Housing

OPEN TO:

Families and seniors

BEDROOM SIZES:

1bdr, 2bdr, 3bdr

RENT/INCOME/OCCUPANCY REQUIREMENTS:

SEE NEXT PAGE

HOW TO APPLY:

Email volunteers@jfc-eastbay.org for pre-application package.

DEADLINE:

None listed, apply as soon as possible!

Terraza Palmera at St. Joseph's

Please review the following income ranges to determine what group you may qualify for:

1 Bedroom Apartments

Group 1

7 units	Rent: \$698
If your household size is:	
1 person	\$16,752 — \$30,000
2 people	\$16,752 — \$34,290
3 people	\$16,752 — \$38,580

Group 3

2 units	Rent: \$1,218
If your household size is:	
1 person	\$29,232 — \$50,000
2 people	\$29,232 — \$57,150
3 people	\$29,232 — \$64,300

Group 2

3 units	Rent: \$1,088
If your household size is:	
1 person	\$26,112 — \$45,000
2 people	\$26,112 — \$51,435
3 people	\$26,112 — \$57,870

Group 4

3 units	Rent: \$1,478
If your household size is:	
1 person	\$35,472 — \$60,000
2 people	\$35,472 — \$68,580
3 people	\$35,472 — \$77,160

2 Bedroom Apartments

Group 1

3 units	Rent: \$824
If your household size is:	
2 people	\$19,776 — \$34,290
3 people	\$19,776 — \$38,580
4 people	\$19,776 — \$42,840
5 people	\$19,776 — \$46,290

Group 3

10 units	Rent: \$1,760
If your household size is:	
2 people	\$42,240 — \$68,580
3 people	\$42,240 — \$77,160
4 people	\$42,240 — \$85,680
5 people	\$42,240 — \$92,580

Group 2

9 units	Rent: \$1,448
If your household size is:	
2 people	\$34,752 — \$57,150
3 people	\$34,752 — \$64,300
4 people	\$34,752 — \$71,400
5 people	\$34,752 — \$77,150

Terraza Palmera at St. Joseph's

Please review the following income ranges to determine what group you may qualify for:

3 Bedroom Apartments

Group 1

4 units	Rent: \$1,658
If your household size is:	
3 people	\$39,792 — \$64,300
4 people	\$39,792 — \$71,400
5 people	\$39,792 — \$77,150
6 people	\$39,792 — \$82,850
7 people	\$39,792 — \$88,550

Group 2

6 units	Rent: \$2,019
If your household size is:	
3 people	\$48,456 — \$77,160
4 people	\$48,456 — \$85,680
5 people	\$48,456 — \$92,580
6 people	\$48,456 — \$99,420
7 people	\$48,456 — \$106,260

(*) There is no minimum income requirement for Section 8 applicants.

East Bluff

1813 Marlesta Court, Pinole, California



MANAGED BY:

Eden Housing

OPEN TO:

Families and seniors

BEDROOM SIZES:

Studio, 1bdr, 2bdr

RENT AMOUNTS:

1bdr: \$1,269 - \$1,357/month

2bdr: \$1,510 - \$1,832/month

MINIMUM HOUSEHOLD INCOME REQUIREMENT:

Maximum for 1-person household:

\$50,000-\$60,000

OCCUPANCY:

1-bedroom: 1-3 people

2-bedroom: 2-5 people

HOW TO APPLY:

Online Application Form: https://www.on-site.com/form_applications_updt.jsp?goal=6&attr=x20&property_id=197757&lease_id=0&unit_id=0&required=

DEADLINE:

We are now accepting applications for our waiting list only. Our waiting list is 12-24 months.

Helios Corner

1531 University Ave, Berkeley, CA



MANAGED BY:

SAHA

OPEN TO:

Seniors, ages 62 and older (no one under 62 is allowed to apply or reside there).

BEDROOM SIZES:

Studio, 1 or 2-bedroom

RENT AMOUNTS:

See next page

MINIMUM HOUSEHOLD INCOME REQUIREMENT:

See next page

OCCUPANCY:

1-5 people

HOW TO APPLY:

Apply online starting March 6 at [Apply for Housing | SAHA \(sahahomes.org\)](https://www.sahahomes.org)

DEADLINE:

Waitlist opens on March 6. Apply online above.

Studio (50% AMI) Rent: \$1,251		
Number of People in Household	1 Person	2 Persons
Minimum Yearly Income	\$30,024	\$30,024
Maximum Yearly Income	\$51,800	\$59,200

1-Bedroom (50% AMI) Rent: \$1,324			
Number of People in Household	1 Person	2 Persons	3 Persons
Minimum Yearly Income	\$31,776	\$31,776	\$31,776
Maximum Yearly Income	\$51,800	\$59,200	\$66,600

1-Bedroom (60% AMI) Rent: \$1,602			
Number of People in Household	1 Person	2 Persons	3 Persons
Minimum Yearly Income	\$38,448	\$38,448	\$38,448
Maximum Yearly Income	\$62,160	\$71,040	\$79,920

2-Bedroom (60% AMI) Rent \$1,916				
Number of People in Household	2 Persons	3 Persons	4 Persons	5 Persons
Minimum Yearly Income	\$45,984	\$45,984	\$45,984	\$45,984
Maximum Yearly Income	\$71,040	\$79,920	\$88,740	\$95,880

Minimum income figures are subject to change. There is no minimum income requirement for households with Section 8 assistance. Rent amounts are subject to change. Income Limits are subject to change.

Eligibility

All household members must be 62 years or older at the time of application.

The Heritage

2222 Pacheco Ave, Concord, CA TEL : (925) 687-1200



MANAGED BY:

Barcelon

OPEN TO:

Seniors, ages 62 and older or Mobility impaired. Available for Section 8 vouchers as well.

BEDROOM SIZES:

Studio or 1-bedroom

RENT AMOUNTS:

Approximately 30% of income.

MINIMUM HOUSEHOLD INCOME REQUIREMENT:

No minimum. Maximum income range is up to \$84,800.

OCCUPANCY:

1-2 people

HOW TO APPLY:

Contact volunteers@jfc-eastbay.org for an application.

DEADLINE:

None listed.

Plaza Tower

2020 Grant St, Concord, CA TEL : 925-685-7887



MANAGED BY:

Barcelon

OPEN TO:

Seniors, ages 55 and older or Mobility impaired.

BEDROOM SIZES:

1-bedroom

RENT AMOUNTS:

Approximately \$1,032

MINIMUM HOUSEHOLD INCOME REQUIREMENT:

Minimum to maximum income range is approximately \$51,000 to \$112,000.

OCCUPANCY:

1-2 people

HOW TO APPLY:

Contact volunteers@ifcs-eastbay.org for an application.

DEADLINE:

None listed.

Beth Eden

1100 Market St, Oakland, CA



MANAGED BY:

CCHC

OPEN TO:

Seniors 62 years or older.

BEDROOM SIZES:

1-Bedroom

RENT AMOUNTS:

Rent is 30% of your income.

MINIMUM HOUSEHOLD INCOME REQUIREMENT:

Your household monthly income must be 30% AMI. No minimum income, but max income is \$59,200 for 2 people.

OCCUPANCY:

1-2 people.

HOW TO APPLY:

Apply online at [Christian Church Homes » Blog Archive Beth Eden \(cchnc.org\)](http://www.cchnc.org)

DEADLINE:

None provided.

Bishop Roy C. Nichols

1027 60th Street, Oakland, CA



MANAGED BY:

CCHC

OPEN TO:

Seniors 62 years or older.

BEDROOM SIZES:

1-Bedroom

RENT AMOUNTS:

Rent is 30% of your income.

MINIMUM HOUSEHOLD INCOME REQUIREMENT:

Your household monthly income must be 30% AMI. No minimum income, but max income is \$59,200 for 2 people.

OCCUPANCY:

1-2 people.

HOW TO APPLY:

Apply online at [Christian Church Homes » Blog Archive Bishop Roy C. Nichols \(cchnc.org\)](http://ChristianChurchHomes.org/Blog/Archive/BishopRoyCNichols)

DEADLINE:

None provided.